



042 Who lives in the jungle?

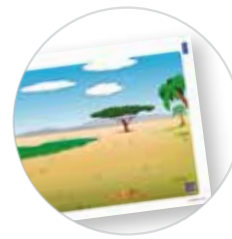
Identifying and classifying animals in accordance with their habitat

Starting Session

Hand out the Miniland animals. Ask the children the names of the animals and if they know when each of them lives. Print out and show the jungle sheet with the animals already in place and ask about them.

Miniland Product Game

Pick up a Miniland animal in turns and ask where it lives. Look for and place the animals which live in the jungle on the sheet with no animals (sheets printed out beforehand). Work on vocabulary related to the jungle. You can also work on the 4 habitats (jungle, sea, farm, woods) simultaneously.



Digital Game

When you have finished, play the digital game to reinforce the content. The game consists of dragging the animals which live in the jungle to the top of the screen. There are 6 correct animals and 3 intruders.



Educational content

Language

- Vocabulary related to jungle.
- Learn the rules that govern the dialogues.

Natural Sciences

- Classifying animals in accordance with habitat: the jungle.

Mathematics

- Counting
- Spatial notions: up and down

ICT

Use of a digital environment



Compatible Miniland Material

- Ref. 25119 - Jungle animals 9 pcs
- Ref. 25123 - Jungle animals 7 pcs
- Ref. 25137 - Jungle animals 12 pcs
- Ref. 25140 - Farm & jungle animals 30 pcs

Multilingual education

Vocabulary and speaking.



Age
3-6 years.



Themes
Animals.